

Report No. : TSZ24EF027D01-01

Page 1 of 6

Test Report

Client	:	Jiang Xi Cheng jiang new energy Co.,Ltd
Address	:	Zhongcheng Industrial Park, Wuning County Industrial Park,Jiujiang City, Jiangxi Province

The following sample(s) and sample information was/were submitted and identified by/on the behalf of the client

Sample Name	:	Lithium ion battery
Model/P.O. No.	:	INR21700 4000mAh/ INR21700 2500mAh/ INR21700 3000mAh INR21700 3500mAh/ INR21700 3800mAh/ INR21700 4500mAh INR21700 4700mAh/ INR21700 4800mAh/ INR21700 4900mAh INR21700 5000mAh/ INR21700 5100mAh/ INR21700 5200mAh INR21700 5300mAh/ INR21700 5400mAh/ INR21700 5500mAh INR21700 5600mAh/ INR21700 5700mAh/ INR21700 5800mAh INR21700 5900mAh/ INR21700 6000mAh
Manufacturer	:	Jiang Xi Cheng jiang new energy Co.,Ltd
Received Date	:	May 17, 2024
Test Period	:	May 17, 2024~May 21, 2024
Test Requested	:	EU RoHS 2011/65/EU and 2015/863/EU

Conclusion

-	Lead(Pb), Cadmium(Cd), Mercury(Hg), Hexavalent Chromium(Cr ⁶⁺)	PASS
-	Polybromobiphenyls (PBBs) & Polybromodiphenyl ethers (PBDEs)	PASS
-	DBP, BBP, DEHP, DIBP	PASS

For Further Details, Please Refer To the Following Page(s)

Approved by: 

Date: May 21, 2024



Add: Building 1/4, No.2, Jinlong Road, Longgang District, Shenzhen, Guangdong, China.

Post Code: 518116

Tel: 0755-89457984

Website: www.tiansu.org

E-mail: tsjc@tiansu.org

Report No. : TSZ24EF027D01-01

Page 2 of 6

Test Method

Test Item(s)	Test Method	Equipment	MDL
Pb, Cd, Hg, Cr, Br	IEC 62321-3-1:2013	XRF	5mg/kg
Pb, Cd	IEC 62321-5:2013	ICP-OES	5mg/kg
Hg	IEC 62321-4:2013+AMD1:2017	ICP-OES	5mg/kg
Cr ⁶⁺	IEC 62321-7-2:2017	UV-Vis	5mg/kg
	IEC 62321-7-1:2015		0.10μg/cm ²
PBBs & PBDEs	IEC 62321-6:2015	GC-MS	5mg/kg
DBP, BBP, DEHP, DIBP	IEC 62321-8:2017	GC-MS	30mg/kg

Test Result(s)

- Screening test results

Test items	1	2	3	4	5	6	7	8	9
Pb	P	P	P	P	P	D	P	P	P
Cd	P	P	P	P	P	D	P	P	P
Hg	P	P	P	P	P	P	P	P	P
Cr	P	P	P	P	P	P	P	P	P
Br	P	P	/	P	/	/	P	P	P
Conclusion	P	P	P	P	P	D	P	P	P

Test items	10	11	12	13	14	15	16	17	18
Pb	P	P	D	P	P	P	P	P	P
Cd	P	P	D	P	D	P	P	P	P
Hg	P	P	P	P	P	P	P	P	P
Cr	P	P	P	P	P	P	P	P	P
Br	P	P	/	/	/	P	/	P	P
Conclusion	P	P	D	P	D	P	P	P	P

Note:

- It is the result on total Br while testing PBBs and PBDEs by XRF. It is the result on total Cr while testing Hexavalent Chromium by XRF.

Report No. : TSZ24EF027D01-01

Page 3 of 6

- Results are obtained by XRF for primary screening, and chemical testing by ICP (for Cd, Pb, Hg), UV-Vis (for Cr(VI)) and GCMS (for PBBs, PBDEs) is recommended to be performed, if the concentration exceeds the below warning value according to IEC 62321-3-1:2013 (unit: mg/kg)

Element	Polymer	Metal	Composite Materials
Cd	$P \leq 70-3\sigma < D < 130+3\sigma \leq F$	$P \leq 70-3\sigma < D < 130+3\sigma \leq F$	$P \leq 50-3\sigma < D < 150+3\sigma \leq F$
Pb	$P \leq 700-3\sigma < D < 1300+3\sigma \leq F$	$P \leq 700-3\sigma < D < 1300+3\sigma \leq F$	$P \leq 500-3\sigma < D < 1500+3\sigma \leq F$
Hg	$P \leq 700-3\sigma < D < 1300+3\sigma \leq F$	$P \leq 700-3\sigma < D < 1300+3\sigma \leq F$	$P \leq 500-3\sigma < D < 1500+3\sigma \leq F$
Br	$P \leq 300-3\sigma < D$	----	$P \leq 250-3\sigma < F$
Cr	$P \leq 700-3\sigma < D$	$P \leq 700-3\sigma < D$	$P \leq 500-3\sigma < F$

- P=PASS, F=FAIL, D=DETECTED

- mg/kg = ppm = 0.0001%, /= Not Available

- Chemical test results:

Test results of Pb, Cd, Hg and Cr⁶⁺

Test Item(s)	MDL	Result(s) (mg/kg)			Limit (mg/kg)
		6	12	14	
Lead(Pb)	5mg/kg	N.D.	N.D.	N.D.	1000
Cadmium(Cd)	5mg/kg	N.D.	N.D.	N.D.	100
Mercury(Hg)	5mg/kg	N.D.	N.D.	N.D.	1000
Hexavalent Chromium(Cr ⁶⁺)#1	5mg/kg	/	/	/	1000
Hexavalent Chromium(Cr ⁶⁺)#2	0.10μg/cm ²	N.D.	N.D.	N.D.	/

Note:

- mg/kg=ppm=parts per million;
- N.D.=Not Detected (<MDL); MDL=method detection limit;
- #1: For non-metal materials test.
- #2: For metal materials test:
 “Positive” indicates Cr⁶⁺ in a sample is detected above 0.13μg/cm²;
 “Negative” indicates Cr⁶⁺ in a sample is detected below 0.10μg/cm²;

Report No. : TSZ24EF027D01-01

Page 4 of 6

Test results of Phthalates

Test Item(s)	MDL	Result(s) (mg/kg)				Limit (mg/kg)
		1	2	4	7	
Dibutyl phthalate(DBP)	30mg/kg	N.D.	N.D.	N.D.	N.D.	1000
Butyl benzyl phthalate(BBP)	30mg/kg	N.D.	N.D.	N.D.	N.D.	1000
Di (2-ethylhexyl) phthalate(DEHP)	30mg/kg	N.D.	N.D.	N.D.	N.D.	1000
Diisobutyl phthalate (DIBP)	30mg/kg	N.D.	N.D.	N.D.	N.D.	1000

Test Item(s)	MDL	Result(s) (mg/kg)					Limit (mg/kg)
		8	9	10	11	18	
Dibutyl phthalate(DBP)	30mg/kg	N.D.	N.D.	N.D.	N.D.	N.D.	1000
Butyl benzyl phthalate(BBP)	30mg/kg	N.D.	N.D.	N.D.	N.D.	N.D.	1000
Di (2-ethylhexyl) phthalate(DEHP)	30mg/kg	N.D.	N.D.	N.D.	N.D.	N.D.	1000
Diisobutyl phthalate (DIBP)	30mg/kg	N.D.	N.D.	N.D.	N.D.	N.D.	1000

Note:

- mg/kg=ppm=parts per million;
- N.D.=Not Detected (<MDL);
- MDL=method detection limit.

Test components:

1	Purple plastic	2	White plastic
3	Silver metal	4	Brown plastic
5	Silver metal	6	Silver metal
7	White plastic	8	Black plastic
9	Green tape	10	Blue tape
11	White plastic	12	Positive lug
13	Negative lug	14	Aluminum foil
15	Positive toner	16	Copper foil
17	Negative toner	18	White plastic

Report No. : TSZ24EF027D01-01

Page 5 of 6

Chemical Test Process

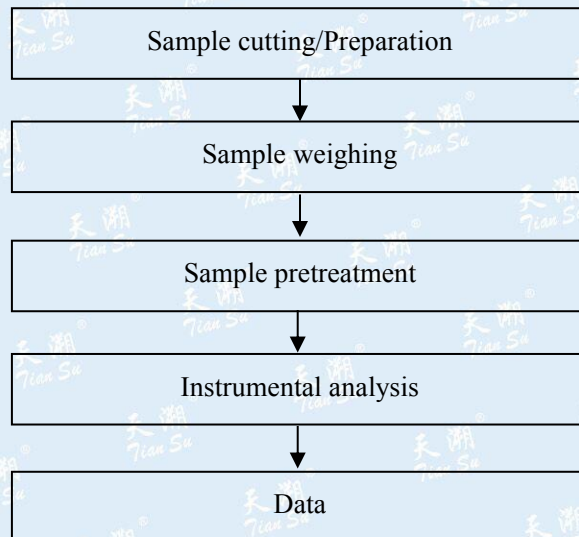
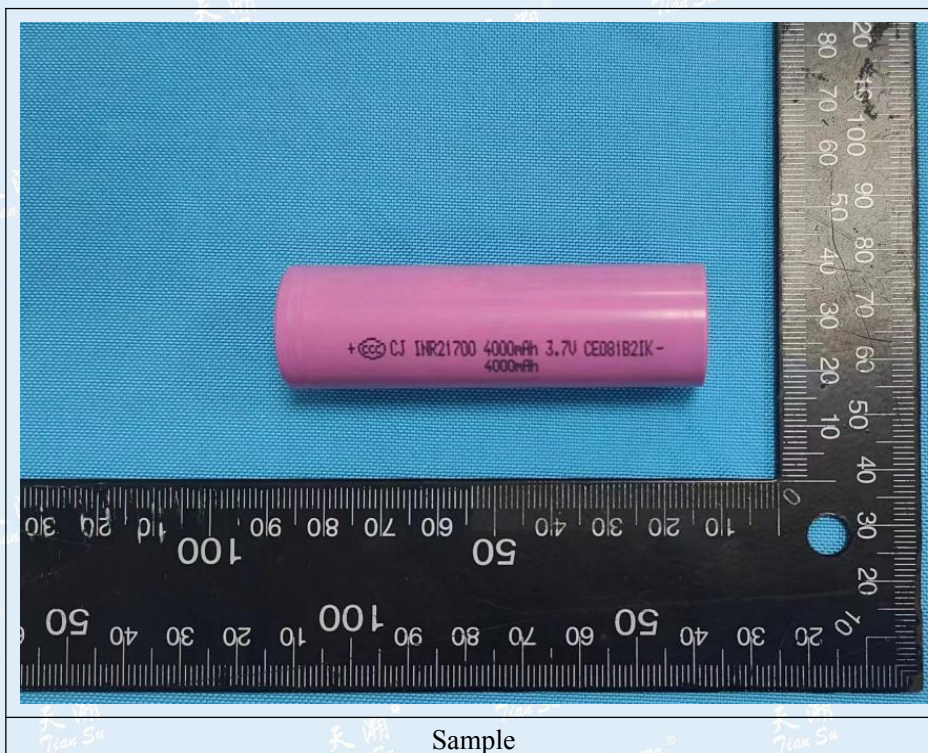


Photo of the sample



Sample

Report No. : TSZ24EF027D01-01

Page 6 of 6



***** End of report *****

This report is invalid without the Special Seal of Tiansu. This report shall not be altered, increased or deleted. The results shown in this report refer only to the sample(s) tested.

